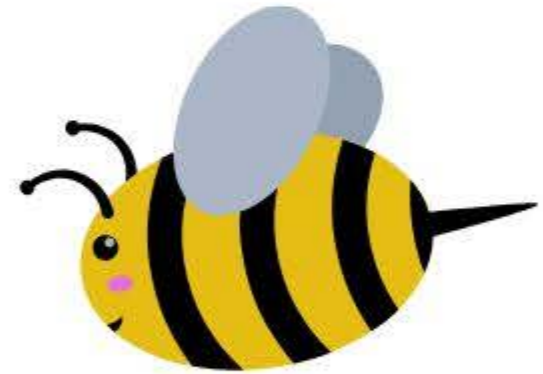


Allstate®

IDENTITY PROTECTION



secure your family's future

Enrolling in a family plan allows you to extend coverage to loved ones. We offer the broadest definition of family in the industry, using “under roof, under wallet” as our guideline. Dependents at any age who live within the employee’s household or are supported financially by the employee are eligible to enroll.

And now we’re extending our coverage definition to include:

- Parents
- In-laws
- Grandparents

Regardless of where they live or whether they receive any financial support from our participants.

