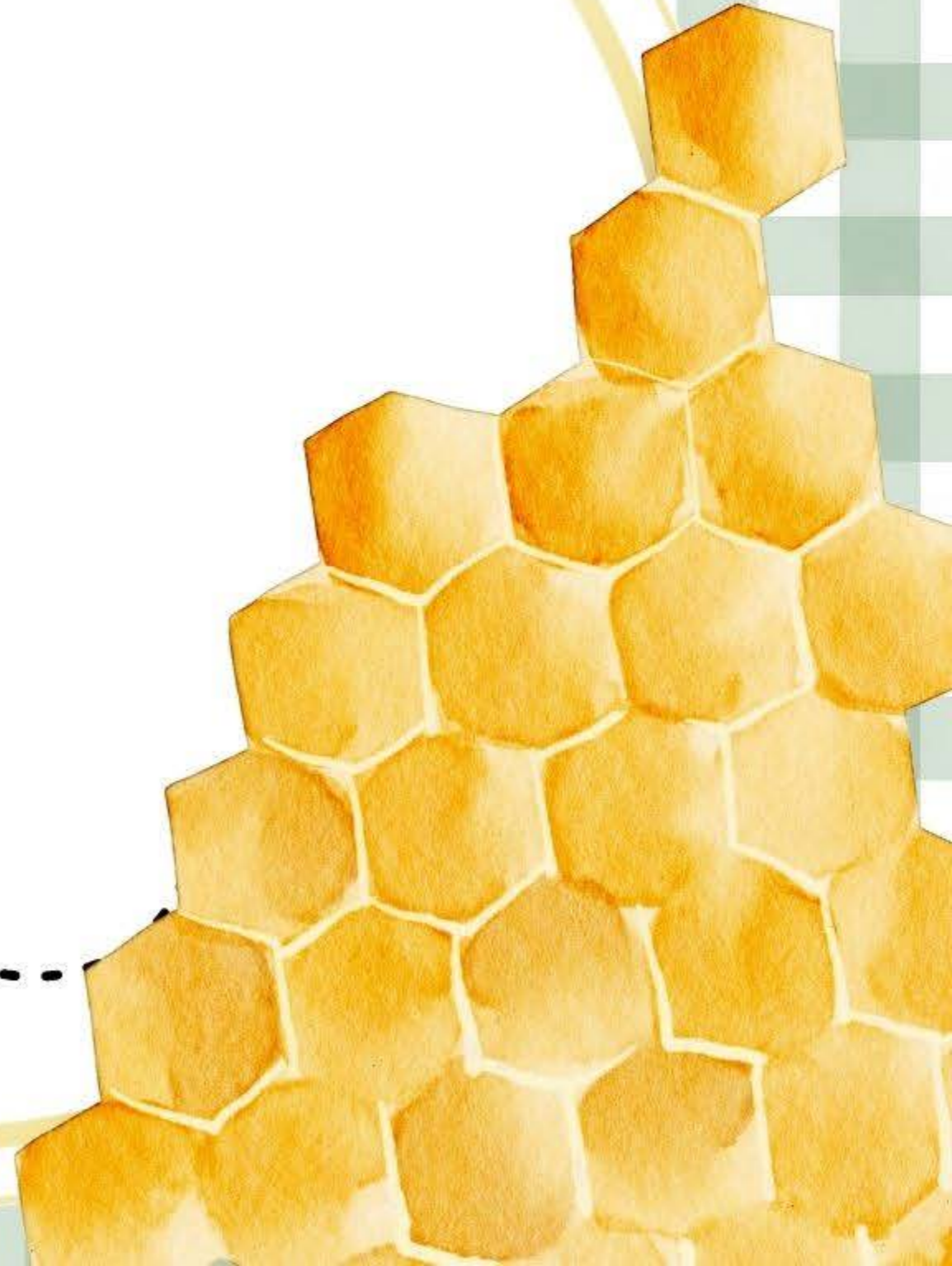
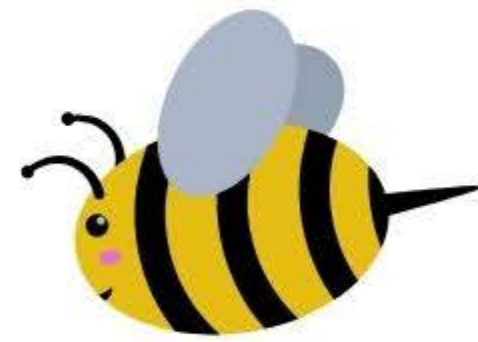




Care^{ATC}[®]



Jaclyn Romine
Client Success Director



Mesquite

EMPLOYEE HEALTH CENTER & PHARMACY

powered by  CareATC

Mesquite Employee Health Center & Pharmacy

230 Pioneer Rd, Mesquite, TX 75149

- **Health Center:**
Monday - Friday: 7:00am – 5:30pm
Walk-in hours for sick visits only: 7:00am - 8:00am
- **Pharmacy:**
Monday – Friday: 7:30am – 5:30pm

How to Schedule an Appointment

- Call 972-882-7120
- Visit www.careatc.com/mesquite
- Download the CareATC Mobile App




CareATC
THE POWER TO BE WELL.

Treatments & Services

Preventative Care

- Adult Immunizations
- Annual Physicals
- Lab Work/Tests
- Men's Health
- Well Women Exams

Chronic Conditions

- Diabetes Management
- Heart Disease
- High Blood Pressure
- High Cholesterol
- Thyroid Conditions
- Weight Management
- Depression/ Anxiety

Urgent Care

- Cold / Flu / Congestion
- Headaches/ Migraines
- Muscle/ Joint Pain
- Nausea/ Vomiting
- Sinus Infection
- Sore Throat
- Urinary Tract Infection
- Skin Cuts/ Rashes
- Sprain/ Strains
- Seasonal Allergies



Patient Experience Comes Primary



Comprehensive Care

Primary care, preventative medicine, illness or injury, and chronic disease management.



Little to No Wait-Time

Fast appointment scheduling, little to no wait time, and 30-minute appointments



Affordable Healthcare

\$0 for preventative care
\$15 copay for non-preventative care