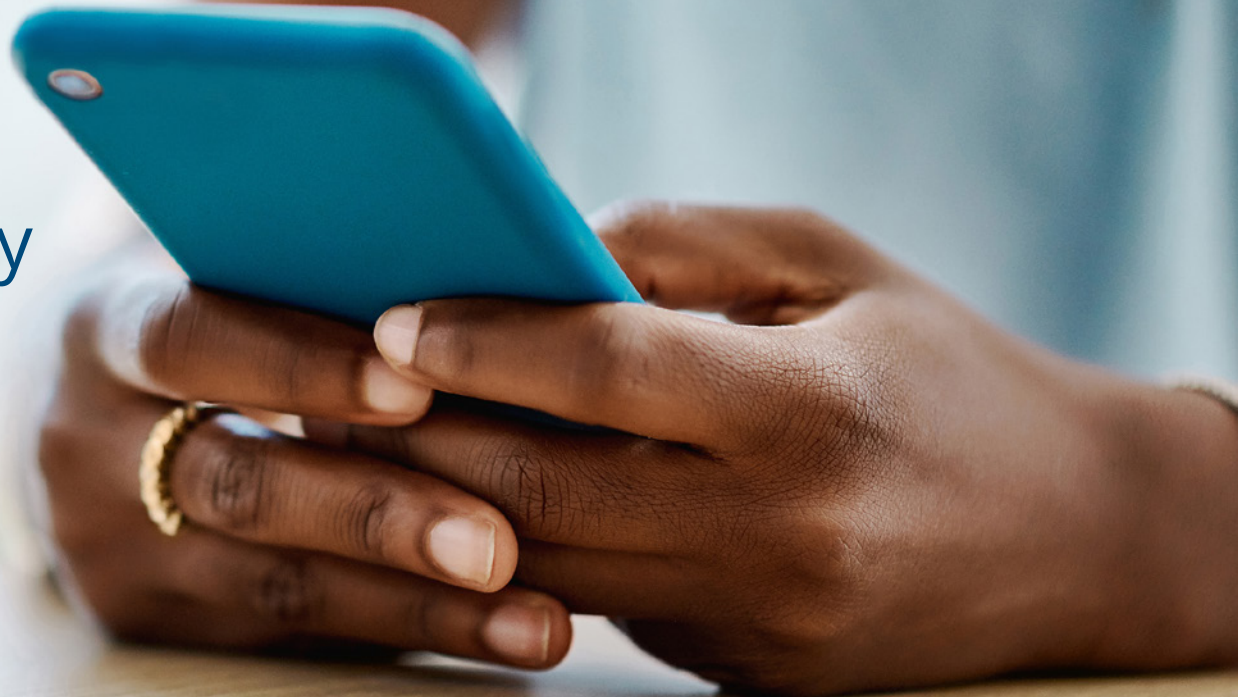




Register Your Way



Two ways to access your member portal, online or via our mobile app.

To use the member portal, complete the one-time registration process. Then you can log in with the same information online or via the app.

Registering Online via the My Blue Element IL member site

- To register, click the Create My Account button under the Participant section
- Enter your information on the screens that follow to register. You can find your Member ID number on your ID card. You can also use your SSN.

Registering via the Blue Element Mobile IL app

- To register via the mobile app, tap Not registered? Register today! on the app home screen.
- Enter your information on the screens that follow. You can find your Member ID number on your ID card. You can also use your SSN.

Manage Your Benefits with the myBlueElementIL.com Member Portal on the Member Site

You can find the same important information about your health benefits online or via the app. Our portal lets you:

- Filter claims by family member name and type
- Show your ID card to providers
- View and filter claims for quick reference
- Access important benefits information
- Connect with customer service by phone
- Ask questions and receive answers from customer service through our message center
- Find a doctor
- View each family member's information and benefits
- See the status of your deductible and out-of-pocket maximum
- Easily access member-specific services in your benefit plan through the My Programs section