

# Stafford MSD 2023-2024 BENEFITS GUIDE



Jillian Warren, Account Manager  
First Financial Group of America  
832-853-5523

[Jillian.warren@ffga.com](mailto:Jillian.warren@ffga.com)

<https://benefits.ffga.com/staffordmsd>

Margarita Thomas, Benefits Contact  
281-261-9271  
[mthomas@staffordmsd.org](mailto:mthomas@staffordmsd.org)

# TABLE OF CONTENTS

## TABLE OF CONTENTS

- EMPLOYEE BENEFITS CENTER
- HOW TO ENROLL
- MEDICAL
- DENTAL
- VISION
- FLEXIBLE SPENDING ACCOUNTS & FSA RESOURCES
- HEALTH SAVINGS ACCOUNTS & HSA RESOURCES
- VOLUNTARY SUPPLEMENTAL INSURANCE PRODUCTS
  - EMPLOYER-PAID LIFE INSURANCE
    - TERM LIFE & AD&D
    - TERM LIFE
    - GROUP VOLUNTARY TERM LIFE
  - DISABILITY
  - CANCER INSURANCE
  - CRITICAL ILLNESS INSURANCE
  - PERMANENT LIFE INSURANCE
  - ACCIDENT ONLY INSURANCE
  - HOSPITAL GAP INSURANCE
  - HOSPITAL INDEMNITY INSURANCE
  - IDENTITY THEFT PROTECTION
  - LEGAL PLAN
  - MEDICAL TRANSPORT
  - VOLUNTARY RETIREMENT
    - 403(b) PLANS
    - 457(b) PLANS
  - EMPLOYEE ASSISTANCE PROGRAM
  - COBRA
  - CLEVER RX
  - ADDITIONAL BENEFIT PROGRAMS
- LEGAL NOTICES
- BENEFIT CONTACT INFORMATION

*This guide contains a summary of the benefits offered by your employer. If there is a conflict between the terms of this outline of benefits and the actual contracts, the terms of the contracts will prevail.*

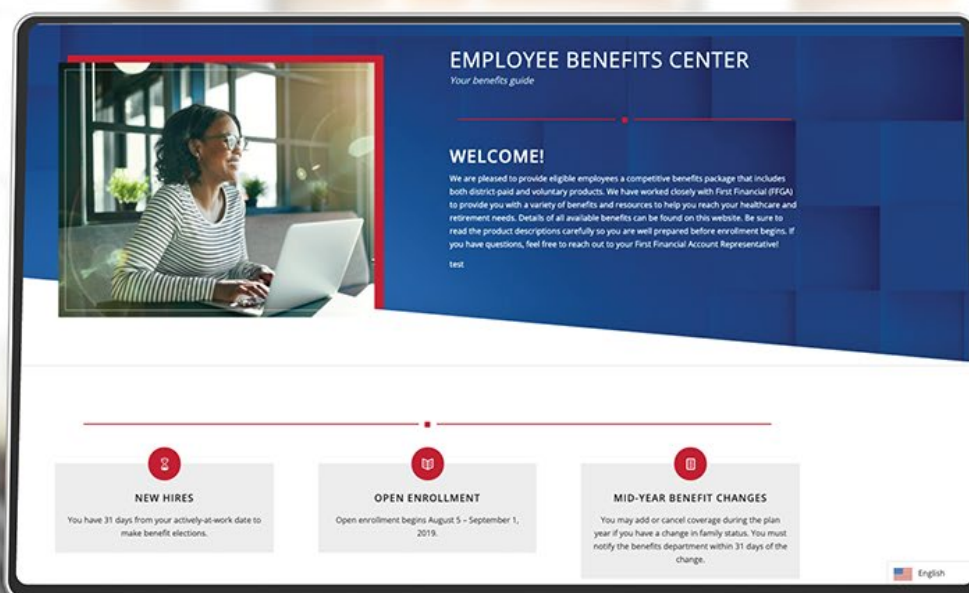
# EMPLOYEE BENEFITS CENTER

## YOUR ONE-STOP-SHOP FOR BENEFIT INFORMATION

Stafford MSD and First Financial are excited to provide you with a custom website filled with information about your benefits. Visit the Employee Benefits Center to see current benefit options for your employer, as well as find claims, important phone number, and enrollment information.

There's no need to register for site access. Simply type the URL below into your browser and you will be directed to your Employee Benefits Center.

<https://ffbenefits.ffga.com/staffordmsd>



# HOW TO ENROLL

**OPEN ENROLLMENT BEGINS: 7/12-8/11/2022**

**ONSITE ENROLLMENT: July 24<sup>th</sup> – July 28<sup>th</sup> at the Administration Building**

## ENROLLMENT ASSISTANCE CENTER INSTRUCTIONS

Call 855-765-4473 and follow the prompts to be connected to your local First Financial branch office. Hours of operation are 8 a.m. to 5 p.m. (local time) Monday through Friday. There is an option to leave a voice message for a representative to call you back. Phone calls will be returned as soon as possible or the next business day if it is after hours.

## ONLINE ENROLLMENT

To begin online enrollment, visit <https://ffga.benselect.com/Enroll/login.aspx>.

### LOGIN

- Login: Your Employee ID or Social Security Number (no dashes)
- PIN (first login only): The last four digits of your Social Security Number and the last two digits of the year you were born (six digits total)
- New PIN: The first time you log in you will be required to change to a new PIN. Please note your new PIN because you will use the new PIN from that point forward.

### VIEW CURRENT BENEFITS

After logging in, you will arrive at the welcome screen. Your current benefits and premium deductions will be listed on this screen.

### VIEW/ADD DEPENDENTS

Click next to view your dependents. It is very important to make sure the social security numbers and birth dates listed are correct. If you plan to add dependents, you will need to enter their social security numbers and birth dates.

### BEGIN ELECTIONS

Click next again to begin making your benefit elections. Remember, no changes to your elections can be made during the plan year unless you have either a qualified mid-year change under Section 125 or a special enrollment event.

## ON-SITE ENROLLMENT (7/24-7/28 at the administration building)

When it's time to enroll in your benefits, your First Financial Account Representative will be on-site to assist you with making your elections.

Schedule an appointment with your account manager at this link [staffordmsd.timetap.com/#/](https://staffordmsd.timetap.com/#/)

# ELIGIBILITY

## ELIGIBILITY

Eligible employees must be actively at work on the plan effective date for new benefits to be effective.

### NEW EMPLOYEES

You have 31 days from your actively-at-work date to make benefit elections. Your New Hire Enrollment elections will be made at the <insert location>.

### EXISTING EMPLOYEES

When it's time to enroll in your benefits, your First Financial Account Representative will be available to assist you with making your elections. Your elections can be made anytime during annual enrollment online from your work or home computer. Before enrollment, take time to educate yourself on the available benefits and what options would work best for you and your family by visiting the Employee Benefits Center.

## MID-YEAR BENEFIT CHANGES

You may add or cancel coverage during the plan year if you have a change in family status. You must notify the benefits department within 31 days of the change.

### QUALIFYING LIFE EVENTS INCLUDE:

- Changes in household, including marriage, divorce, legal separation, annulment, death of a spouse, birth, adoption, placement for adoption, or death of a dependent child
- Loss of health coverage, attributable to your spouse's employment, losing existing health coverage including job-based, individual & student plans, losing eligibility for Medicare, Medicaid, or CHIP, turning 26 and losing coverage through a parent's plan

## DECLINING COVERAGE

If you are eligible for benefits, but wish to DECLINE coverage, please complete the online enrollment either on your work or home computer. Under each option, you will need to select "waive." You **must still complete the beneficiary information.**

# SECTION 125 PLANS

## SECTION 125 PLAN INFORMATION AND RULES

A Section 125 Plan provides a tax-saving way to pay for eligible medical or dependent care expenses. The funds are automatically deducted from your paycheck on a pre-tax basis.

### HERE'S HOW IT WORKS

A Section 125 Plan reduces your taxes and increases your spendable income by allowing you to deduct the cost of eligible benefits from your earnings before tax. Plus, the plan is available to you at no cost, and you're already eligible – all you must do is enroll.

### IS IT RIGHT FOR ME?

The savings you may experience with a Section 125 Plan are outlined in the example below. For instance, you could potentially take home about \$70 more each month if you participated in your employer's Section 125 Plan – that's a savings of \$840 a year!

You cannot change your benefit elections for the plan year unless the benefits office receives notification in writing within 31 days of the status change. If the benefits office is not notified within 31 days of the status change, no benefit change can be made until the next annual open enrollment.

IRS specified changes in family status include:

- Change in legal married status
- Change in number of dependents
- Termination or commencement of employment
- Dependent satisfies or ceases to satisfy dependent eligibility requirements
- Change in residence or worksite that affects eligibility for coverage

SECTION 125 PLAN SAMPLE PAYCHECK		
	WITHOUT S125	WITH S125
<b>Monthly Salary</b>	\$2,000	\$2,000
<b>Less Medical Deductions</b>	-N/A	-\$250
<b>Taxable Gross Income</b>	\$2,000	\$1,750
<b>Less Taxes (Fed/State at 20%)</b>	-\$400	-\$350
<b>Less Estimated FICA (7.65%)</b>	-\$153	-\$133
<b>Less Medical Deductions</b>	-\$250	-N/A
<b>Take Home Pay</b>	\$1,197	\$1,267

**YOU COULD SAVE \$70 PER MONTH IN TAXES BY PAYING FOR YOUR BENEFITS ON A PRE-TAX BASIS!**

*\*The figures in the sample paycheck above are for illustrative purposes only.*

# MEDICAL

## TRS-ACTIVECARE

The district's medical plans are offered through TRS. From in- and out-of-network options to comprehensive prescription drug coverage and special health and wellness programs, TRS-ActiveCare has been designed to flexibly meet the needs of nearly half a million public education employees.

## BCBSTX

Blue Cross Blue Shield of Texas | <https://www.bcbstx.com/trsactivecare/> | 1.866.355.5999

### TRS-ACTIVECARE PRIMARY

- Copays for doctor visits and generic prescriptions before you meet deductible
- Statewide Network
- Participants must select a primary care provider who will make referrals to specialists
- No out-of-network coverage
- Employee will receive two (2) ID cards (BCBS & Caremark)

### TRS-ACTIVECARE HD

- Must meet deductible before plan pays for non-preventive care
- In-network and out-of-network benefits – separate out-of-network deductible/out-of-pocket maximum
- Nationwide network
- Deductible applies to medical and pharmacy
- No requirement for PCP or referrals
- Compatible with health savings account (HSA)
- Employee will receive two (2) ID cards (BCBS & Caremark)

### TRS-ACTIVECARE PRIMARY+

- Copays for many services and drugs
- Statewide Network
- Participants must select a primary care provider who will make referrals to specialists
- No out-of-network coverage
- Employee will receive 2 ID cards (BCBS & Caremark)

### TRS-ACTIVECARE 2 – CLOSED TO NEW ENROLLEES

- Copays for many drugs and services
- Nationwide network with out-of-network coverage
- Employee will receive two (2) ID cards (BCBS & Caremark)

### TRS-ACTIVECARE PLAN PRESCRIPTION BENEFITS

Express Scripts | <https://www.express-scripts.com/trsactivecare/> | 1.844.367.6108

When you enroll in a BCBSTX Plan, you automatically receive prescription drug coverage through CVS Caremark which gives you access to a large, national network of retail pharmacies.



# MEDICAL

## 2023-24 TRS-Active Care Rates

### TRS ACTIVECARE MEDICAL MONTHLY PREMIUMS

COVERAGE TIER	PRIMARY	HD	PRIMARY +	AC2
EMPLOYEE ONLY	\$207.00	\$219.00	\$282.00	\$788.00
EMPLOYEE + SPOUSE	\$942.00	\$974.00	\$1,094.00	\$2,177.00
EMPLOYEE + CHILD(REN)	\$510.00	\$530.00	\$637.00	\$1,282.00
EMPLOYEE + FAMILY	\$1,244.00	\$1,285.00	\$1,449.00	\$2,616.00

*TRS rates shown include your Employer Contribution of \$225*

For more information, please refer to the TRS-ActiveCare website:

<https://www.trs.texas.gov/Pages/healthcare-trsactivecare-2023-24-plans.aspx>





# DENTAL INSURANCE

Ameritas | [www.ameritas.com](http://www.ameritas.com) | 1.800.487.5553

Taking care of your oral health is not a luxury, it is a necessity to long-term optimal health. Dental insurance can greatly reduce your costs when it comes to preventative, restorative, and emergency procedures. Review the plan benefits to see which option is best for you and your family's dental needs. A range of procedures may be covered, such as:

- Comprehensive Exams
- Cleanings
- X-Rays
- Fillings
- Tooth Extractions
- General Anesthesia
- Crowns
- Root Canals

DENTAL MONTHLY PREMIUMS			
	LOW	MIDDLE	HIGH
<b>EMPLOYEE ONLY</b>	\$14.64	\$25.72	\$37.96
<b>EMPLOYEE + SPOUSE</b>	\$28.88	\$51.24	\$74.88
<b>EMPLOYEE + CHILD(REN)</b>	\$35.80	\$69.20	\$95.48
<b>EMPLOYEE + FAMILY</b>	\$50.04	\$94.72	\$132.92



# VISION INSURANCE

Ameritas | [www.ameritas.com](http://www.ameritas.com) | 1.800.877.7195

Proper vision care is essential to your overall well-being. Regular eye exams at any age will help prevent eye disease and keep your vision strong for years to come.

Your employer provides you with a vision plan to take care of you and your family's needs. You must enroll in the vision plan each plan year and premiums are typically paid through payroll deduction. Here are just a few of the areas where you will save money with your plan:

- Eye exams
- Eyeglasses
- Contact lenses
- Eye surgeries
- Vision correction

VISION MONTHLY PREMIUMS	
VSP CHOICE PLAN	
EMPLOYEE ONLY	\$8.24
EMPLOYEE + SPOUSE	\$15.64
EMPLOYEE + CHILD(REN)	\$16.48
EMPLOYEE + FAMILY	\$24.20



# FLEXIBLE SPENDING ACCOUNTS

First Financial Administrators, Inc. | [www.ffga.com](http://www.ffga.com) | 1.866.853.3539

P.O. Box 161968 | Altamonte Springs, FL 32716

## MEDICAL FSA

A Medical Flexible Spending Account (Medical FSA) is an IRS-approved program to help you save taxes and reimburse yourself for out-of-pocket medical expenses not covered under your medical plan. Your employer has chosen the \$610 carryover option for your Medical FSA plan. This option allows you the opportunity to carry over up to \$610 of unclaimed Medical FSA funds into the following plan year. Keep in mind that balances more than \$610 will be forfeited under the use-it-or-lose-it rule.

**Your maximum contribution amount for 2023 is \$3,050.**

## HIGHLIGHTS

- Contributions are automatically deducted from your paycheck on a pre-tax basis, which helps reduce your taxable income and increase your spendable income.
- Your full election will be available to you at the beginning of the plan year.
- Be conservative – any money left in your account at the end of the plan year will be forfeited.
- Use your benefits card to pay for qualified expenses upfront without spending money out of pocket.
- Keep all receipts in case you need to substantiate a claim for tax purposes.

**NOTE: The IRS requires proof that all expenses are eligible.** Keep all receipts in case you need to substantiate a claim for tax purposes. Your receipt must include the date of purchase or service, amount you were required to pay after insurance, description of the product or service, merchant or provider name, and the patient's name.

## DEPENDENT CARE FSA

With a Dependent Care Flexible Spending Account, you can set aside part of your pay on a pre-tax basis to pay for eligible dependent care expenses like childcare, babysitters, and adult day care.

**You may allocate up to \$5,000 per tax year for reimbursement of dependent care services.  
If you are married and file a separate tax return, the limit is \$2,500.**

## HIGHLIGHTS

- Eligible dependents must be claimed as an exemption on your tax return.
- Eligible dependents must be children under age 13 or an adult dependent incapable of self-care.
- Funds become available as contributions are made to your account.
- Keep all receipts in case you need to substantiate a claim for tax purposes.
- Balances will be forfeited at the end of the runoff or grace period.



# FSA RESOURCES

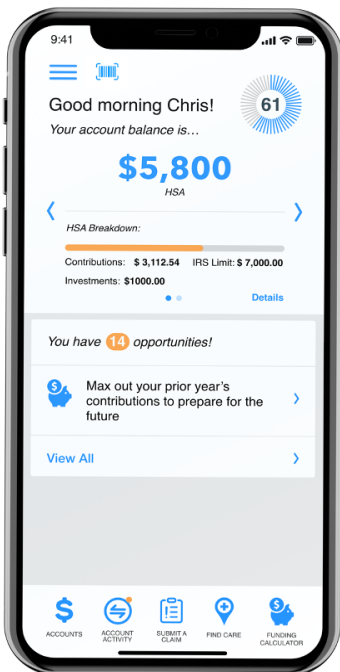
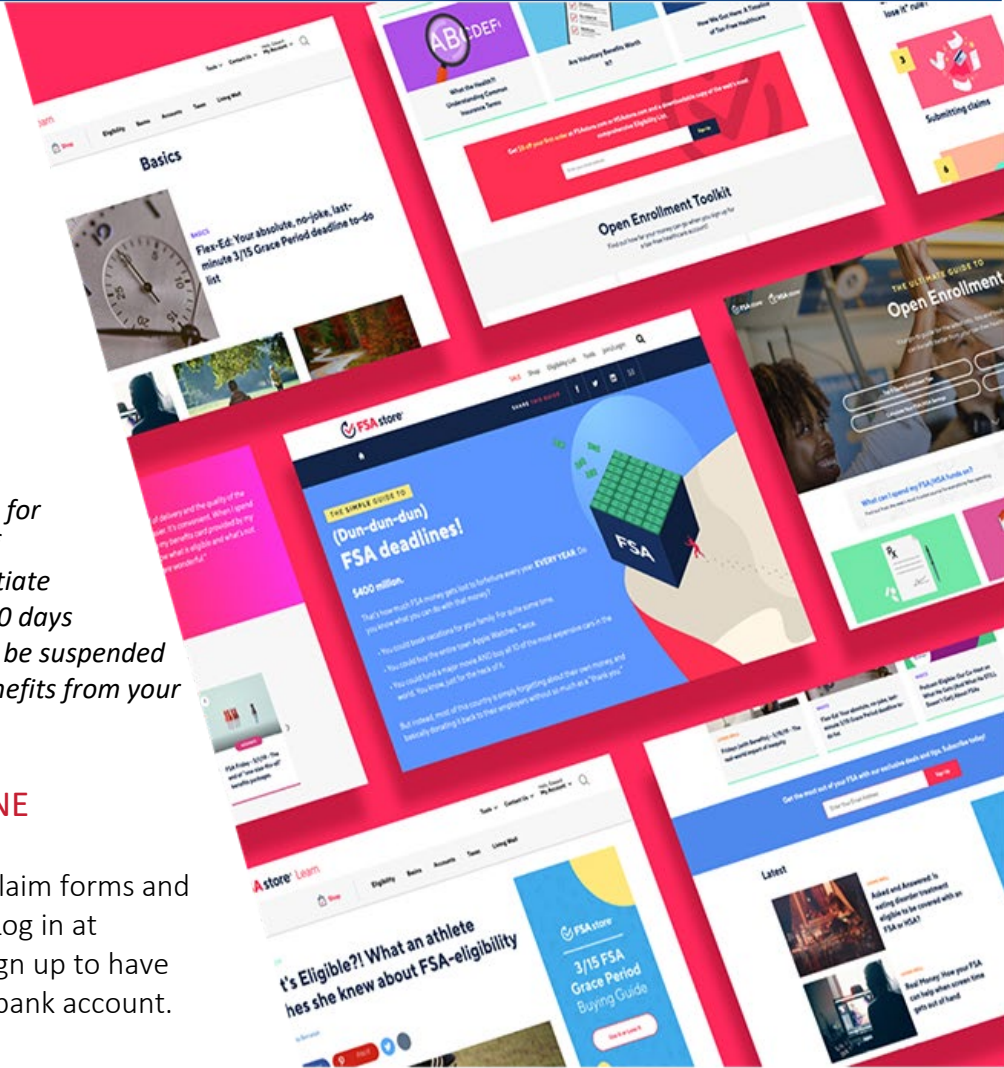
## BENEFITS CARD

The First Financial Benefits Card is available to all employees that participate in a Medical FSA and/or a Dependent Care FSA. The Benefits Card gives you immediate access to your money at the point of purchase. Cards are available for participating employees, their spouse and any eligible dependents who are at least 18 years old.

*The IRS requires validation of most transactions for FSAs. You must submit receipts for validation of expenses when requested. If you fail to substantiate by providing a receipt to First Financial within 60 days of the purchase or date of service your card will be suspended until the necessary receipt or explanation of benefits from your insurance provider is received.*

## VIEW YOUR ACCOUNT DETAILS ONLINE

Sign up to view your account balance, find claim forms and check claims status on our secure website. Log in at [www.ffga.com](http://www.ffga.com). After you log in, you may sign up to have reimbursements directly deposited to your bank account. View the [Portal Log-in Guide](#) now!



## FF MOBILE ACCOUNT APP

With the FF Mobile Account App, you can submit claims, view account balance and history, check claims status, view alerts, upload receipts and documentation and more! The FF Mobile Account App is available for Apple® and Android™ devices on either the App Store<sup>SM</sup> or Google Play Store<sup>TM</sup>. View the FF Mobile Account App [User Guide](#) and [Quick Reference Guide](#).

## FSA STORE

First Financial has partnered with the FSA Store to bring you an easy-to-use online store to better understand and manager your account. You can shop for eligible medical items like bandages and contact solution, browse for products and services using the Eligibility List and visit the Learning Center to find answers to commonly asked questions. Visit the store at <http://www.ffga.com/individuals/#stores> for more details and special deals.



# HEALTH SAVINGS ACCOUNTS

First Financial Administrators, Inc. | [www.ffga.com](http://www.ffga.com) | 1.866.853.3539  
P.O. Box 161968 | Altamonte Springs, FL 32716

## HEALTH SAVINGS ACCOUNTS

A Health Savings Account (HSA) is a great way to help you control your healthcare costs. It works in conjunction with a qualified High Deductible Health Plan (HDHP) to combine tax-free savings earmarked for qualified medical expenses. An HSA allows you to set aside money to pay for higher deductibles associated with a lower monthly premium HDHP. The money you save in monthly insurance premiums is reserved for eligible medical expenses you incur in the future. Eligible expenses include things like co-pays and deductibles, prescriptions, vision expenses, dental care, therapy and medical supplies.

	2022	2023
<b>HSA Contribution Limit</b>	<ul style="list-style-type: none"><li>Self Only: <b>\$3,650</b></li><li>Family: <b>\$7,300</b></li></ul>	<ul style="list-style-type: none"><li>Self Only: <b>\$3,850</b></li><li>Family: <b>\$7,750</b></li></ul>
<b>HDHP Minimum Deductibles</b>	<ul style="list-style-type: none"><li>Self Only: <b>\$1,400</b></li><li>Family: <b>\$2,800</b></li></ul>	<ul style="list-style-type: none"><li>Self Only: <b>\$1,500</b></li><li>Family: <b>\$3,000</b></li></ul>
<i>\$1,000 catch-up contributions (age 55 or older)</i>		

## HIGHLIGHTS

- Balances roll over from year to year and earn interest along the way.
- Portable – you keep it even after you leave employment.
- Tax advantages – invest money in mutual funds to grow your tax savings for either future healthcare costs or retirement.
- Pay for expenses with a benefits debit card that gives you immediate access to your money at the time of purchase.
- Expenses also can be reimbursed through our online portal, online bill pay directly to your provider or submitting a distribution request form.
- Receipts are not required for reimbursement but be sure to save them for tax purposes.

## WHO CAN PARTICIPATE IN AN HSA?

- You must be enrolled in a qualified High Deductible Health Plan (HDHP).
- You cannot be enrolled in Tricare or Medicare or covered under your spouse's traditional (non-HDHP) health care plan.
- You cannot participate in a general purpose Flexible Spending Account (FSA) or Health Reimbursement Arrangement.
- Limited Purpose Flexible Spending Accounts are permitted (dental and vision expenses only).
- You cannot participate if your spouse has a general purpose FSA or HRA at their place of employment.
- You cannot participate if you are being claimed as a dependent on another person's tax return.



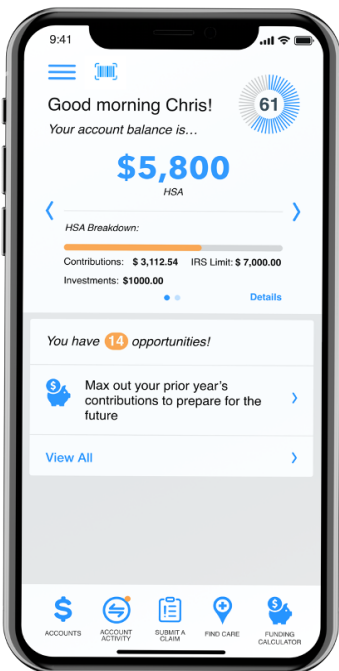
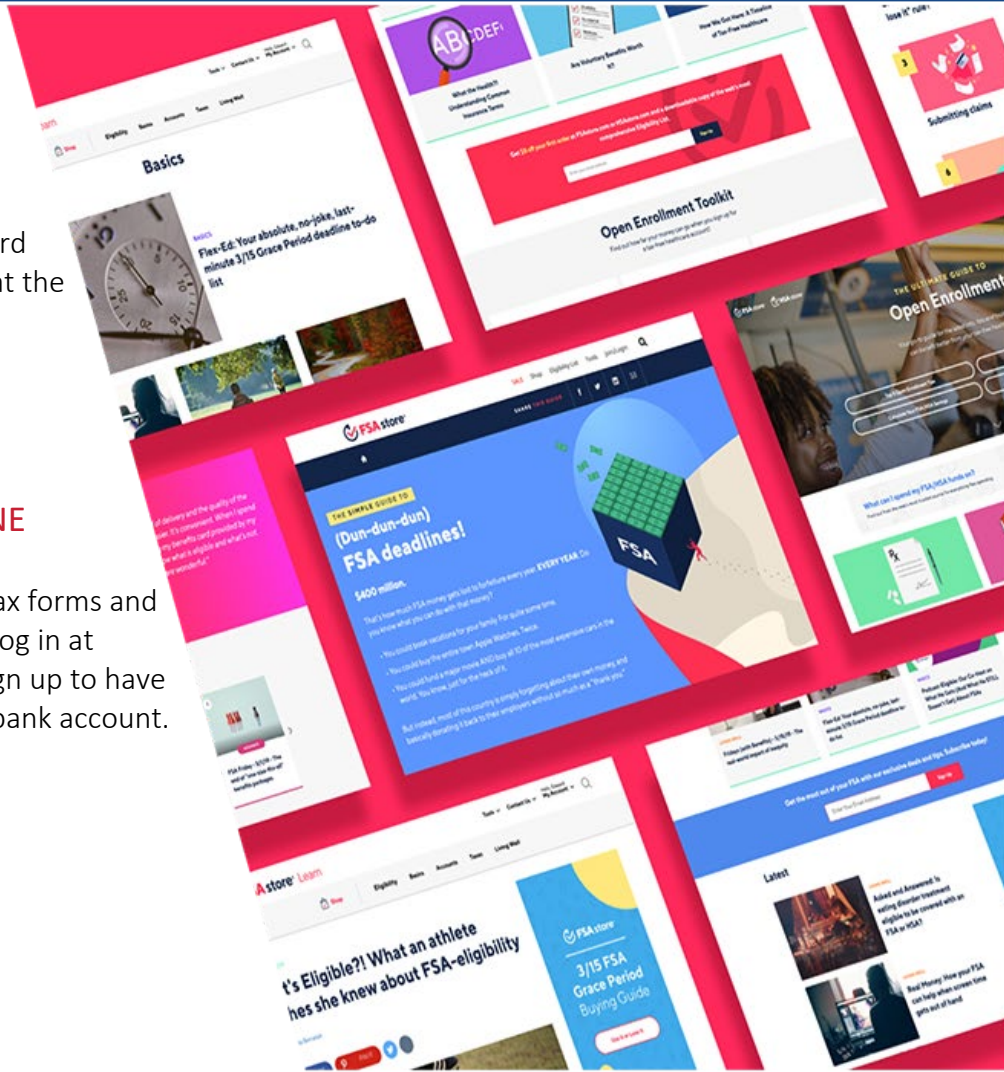
# HSA RESOURCES

## BENEFITS CARD

The First Financial Benefits Card is available to all employees that participate in a Health Savings Account. The Benefits Card gives you immediate access to your money at the point of purchase. Cards are available for participating employees, their spouse and any eligible dependents who are at least 18 years old.

## VIEW YOUR ACCOUNT DETAILS ONLINE

Sign up to view your account balance, find tax forms and check claims status on our secure website. Log in at [www.ffga.com](http://www.ffga.com). After you log in, you may sign up to have reimbursements directly deposited to your bank account. View the [Portal Log-in Guide](#) now!



## FF MOBILE ACCOUNT APP

With the FF Mobile Account App, you can submit claims, view account balance and history, check claims status, view alerts, upload receipts and documentation and more! The FF Mobile Account App is available for Apple® and Android™ devices on either the App Store<sup>SM</sup> or Google Play Store<sup>TM</sup>. View the FF Mobile Account App [User Guide](#) and [Quick Reference Guide](#).

## HSA STORE

First Financial has partnered with the HSA Store to bring you an easy-to-use online store to better understand and manager your account. You can shop for eligible medical items like bandages and contact solution, browse for products and services using the Eligibility List and visit the Learning Center to find answers to commonly asked questions. Visit the store at <http://www.ffga.com/individuals/#stores> for more details and special deals.



# TERM LIFE

Blue Cross Blue Shield of Texas | [www.bcbstx.com/ancillary](http://www.bcbstx.com/ancillary) | 1.877.442.4207

## EMPLOYER-PAID TERM LIFE INSURANCE

Life insurance protects your loved ones. It pays a benefit so they can afford to pay for funeral expenses, pay off debt and maintain their current standard of living. It is one of the best ways to show you care. Your employer provides all eligible employees a \$10,000. The cost of this policy is paid for 100% by your employer. This is a term life policy that is in effect while you are employed.

## VOLUNTARY TERM LIFE INSURANCE

Voluntary life insurance is term life coverage you can purchase in addition to the basic life plan provided by your employer. It will cover you for a specific period of time while you are employed. Plan amounts are offered in tiers so you can choose the amount of coverage that works best for you and your family. Because it's a group plan, premiums are typically lower, so it's more affordable to gain the peace of mind that life insurance provides. Limitations apply, please see policy for details. Visit the Employee Benefits Center for more details.

# TEXAS LIFE – PERMANENT LIFE

Texas Life | [www.texaslife.com](http://www.texaslife.com) | 1.800.283.9233

## TEXAS LIFE INSURANCE - PERMANENT, PORTABLE LIFE INSURANCE

The peace of mind voluntary, permanent life insurance provides is unmatched. It is a solid companion to your group life insurance plan. Texas Life provides life insurance that you can keep for a lifetime. The plan is easy to purchase, pay for, and keep through the convenience of payroll deduction. Coverage is affordable and dependable. Plus, Texas Life has over a century of experience protecting families and giving the peace of mind only permanent life insurance can provide.

### HIGHLIGHT

- You own the policy, even if you change jobs or retire.
- The policy remains in force until you die or up to age 121 if you pay the necessary premium on time.
- It is a permanent, universal life policy which means you can rest easy knowing your loved ones will be well taken care of when you're gone.

# DISABILITY INSURANCE

American Fidelity | [www.americanfidelity.com](http://www.americanfidelity.com) | 1.800.662.1113

Have you ever wondered what would happen to your income if you had an accidental injury, sickness, or pregnancy? That is why you need disability coverage. It replaces a portion of income for the period you are unable to work due to those reasons. You can choose the benefit amount, which is the amount of your income to replace, and the waiting period that you begin receiving payments.

How do you decide if you need disability insurance? Consider these questions when making your decision:

- How much employer leave do you have?
- Do you have savings?
- Do you have other income you can rely on, such as from your spouse or from child support?
- How close are you to retirement?
- Could you go on Social Security Disability or take a Disability Retirement?
- What are your other sources of income?

# CANCER INSURANCE

American Fidelity | [www.americanfidelity.com](http://www.americanfidelity.com) | 1.800.662.1113

Thousands of Americans are diagnosed with cancer each day. No doubt, the news is devastating, both personally and financially. It's impossible to anticipate a cancer diagnosis, but it is possible to prepare for it with a cancer insurance plan.

It is likely that your major medical coverage will not cover all the costs associated with a cancer diagnosis. Supplementing your major medical with cancer insurance may help you pay for related expenses, such as copays and deductibles, specialists, experimental treatment, specialty hospitals, travel expenses, in-home care and more.

Premiums are paid through convenient payroll deduction to ensure your policy remains in force if you should need it. Benefits are paid directly to you, so you can choose how to spend the money. Visit the Employee Benefits Center and view policy for more details.

CANCER INSURANCE		
MONTHLY PREMIUM	BASIC	ENHANCED PLUS
EMPLOYEE	\$15.80	\$31.62
EMPLOYEE + FAMILY	\$26.86	\$53.80

# CRITICAL ILLNESS INSURANCE

American Fidelity | [www.americanfidelity.com](http://www.americanfidelity.com) | 1.800.662.1113

If you've heard of heart attacks, strokes, organ transplants or paralysis, then you're familiar with critical illness. It's likely you or someone you know has experienced one of these life-altering events. Often times, a critical illness has a powerful impact on people's lives, affecting their livelihood and finances.

A critical illness plan can help with the treatment costs of covered illnesses. Benefits are paid directly to you, unless otherwise assigned, giving you the choice of how to spend the money. Plus, there are plans available to provide coverage for you, your spouse and dependent children.

Prepare now for the unexpected with a critical illness insurance plan. The plan helps you focus on getting well rather than worrying about finances. Visit the Employee Benefits Center and view policy for more details.

- Guarantee Issue: \$20,000 for employee
- Children covered at 25% of insured's benefit for no additional cost
- Spouse coverage available up to 50% of insured's benefit for an additional cost
- \$100 Wellness benefit per year
- Plan is portable up to age 75
- Pre-Existing Condition Limitations apply

# ACCIDENT INSURANCE

Metlife | [www.metlife.com](http://www.metlife.com) | 1.800.438.6388

The costs associated with an injury can add up. Between hospital visits, exams and treatment, out-of-pocket costs could put you in a financial hardship. An accident plan pays benefits directly to you so you can determine where to spend the money. It's comforting to know that an accident insurance policy can be there through all stages of your care, from initial treatment to follow-up care. Accident coverage is available to you through payroll deduction and may provide a benefit for costs associated with:

- Concussions
- Lacerations
- Broken teeth
- Emergency room visits
- Ambulance, ground or air
- Intensive care unit

# GAP INSURANCE

American Fidelity | [www.americanfidelity.com](http://www.americanfidelity.com) | 1.800.662.1113

You may think major medical insurance is enough to cover your needs, but the reality is that many plans may only cover a portion of your overall expenses. It's important to protect yourself in the event of a sudden hospitalization.

A Hospital Gap Insurance plan pays benefits directly to you and is designed to help cover the gap between what your traditional medical plan will cover and the out-of-pocket expenses you will pay. The plan may include benefits you can use to help pay for inpatient hospital stays and surgeries, doctor's office treatments and diagnostic testing costs.

With Hospital Gap Insurance, you can have peace of mind knowing that unexpected medical expenses will less of a financial burden for you and your family members.

# HOSPITAL INDEMNITY INSURANCE

Aetna | [www.aetna.com](http://www.aetna.com) | 1.888.416.2277

Hospital stays are costly. If you or a family member find yourself in the hospital due to a sudden accident or illness, you may struggle financially, even if you have a good medical plan. With a hospital indemnity plan, you can rest assured those extra expenses won't be a financial burden.

Unlike medical plans, there are no deductibles to meet with a hospital indemnity plan. As soon as you incur a qualified event, you can file a claim and start receiving benefits.

The plan pays a lump sum benefit in a previously specified amount. The money can be used for medical costs, insurance deductibles, groceries, transportation, childcare – the choice is up to you!

HOSPITAL INDEMNITY		
MONTHLY PREMIUM	Plan 1	Plan 2
EMPLOYEE	\$9.34	\$18.18
EMPLOYEE & SPOUSE	\$18.99	\$37.25
EMPLOYEE & CHILDREN	\$14.79	\$28.73
EMPLOYEE & FAMILY	\$23.33	\$45.48



# IDENTITY THEFT PROTECTION

Ilock360 | [www.ilock360.com](http://www.ilock360.com) | 1.855.287.8888

Millions of Americans report having their identity stolen each year. People are online and mobile more than any time in history, so it's no surprise that identity theft is on the rise. And it goes far beyond simply having your credit card number stolen. While credit card fraud is one of the highest reported types of identity theft, it also includes bank, loan, phone and tax-related fraud.

Identity theft insurance won't prevent your identity from being stolen. But it will be there to alert you if any suspicious activity is noticed under your name. The plan includes credit bureau monitoring, social security number usage and lost wallet protection. Accounts are monitored daily so you can rest easy knowing your identity is being protected even while you sleep. The sooner you can take action to close your accounts, the quicker you can recover your identity.

It takes years to establish a good reputation with credit lenders and employers. Make sure it remains yours by taking advantage of the identity theft insurance offered through your employer.

# LEGAL PLAN

LegalShield | [www.legalshield.com](http://www.legalshield.com) | 1.800.654.7757

Have you ever found yourself in need of legal advice, but aren't sure where to go? A voluntary group legal plan helps fill that need. It provides you with access to professional lawyers at a low monthly rate. For just a few dollars a month, you can consult with a lawyer about having your will prepared, reviewing documents, contesting a traffic ticket, lawsuits, divorce and so much more. Expert legal advice is available at your fingertips.

# VOLUNTARY RETIREMENT PLANS

TCG Carrier | [www.website.com](http://www.website.com) | 1.800.555.5555

## 403(b) RETIREMENT PLAN

Research shows that Americans are living well past retirement years. Are you saving enough to be able to enjoy those years? A 403(b) plan can help you get there.

It's an IRS-approved retirement plan that allows you to set aside money on an after-tax basis for your retirement. Contributions are conveniently made through payroll deduction, so money is moved from your paycheck into the account automatically. Plus, your employer may even match your contributions based on how much you put into the plan. Now is the time to take full advantage of this opportunity to maximize your retirement savings!

## 457(b) RETIREMENT PLAN

The 457(b) plan is an employer-sponsored voluntary retirement savings plan that allows you to save money for retirement on a tax-deferred basis. The plan contains most of the same features of the 403(b) plan but is different in one unique way. Distributions from a 457(b) Deferred Compensation Plan are not subject to the 10 percent excise tax for early withdrawal.

## CONTRIBUTION LIMITS

In 2023, you can contribute 100 percent of your includible compensation up to \$22,500, whichever is less. If you are age 50 or older, you can contribute up to an additional \$7,500 for a total of \$30,000.

# EMPLOYEE ASSISTANCE PROGRAM

LifeWorks | [www.lifeworks.com](http://www.lifeworks.com) | 1.800.433.7916

Life pulls us in many different directions. Between kids, personal relationships, extracurricular activities, and family time, it seems like we don't have enough time in day to fit it all in. When life gets you stressed, call the employee assistance line provided by your employer. It offers 24/7 access to professionals who can help you successfully face emotional issues.

An employee assistance program, or EAP, is a free, voluntary program offered by your employer. With one phone call, you will have access to short-term counseling and confidential assessments whenever you have a personal or work-related problem.

Employee assistance programs address a wide range of issues including mental and emotional well-being, substance abuse and grief. Counselors are held to the highest ethical standard and are trained to keep your situation confidential. They work with you to determine the best way to address your needs and move you in a positive direction.

# COBRA

First Financial Administrators, Inc. | [www.ffga.com](http://www.ffga.com) | 1.800.523.8422, option 4

Life is full of unexpected events that may impact your health insurance coverage. Under the Consolidated Omnibus Budget Reconciliation Act, better known as COBRA, you have the right to continue your group health coverage such as medical, dental, vision insurance and flexible spending accounts for a limited period of time.

## HIGHLIGHTS

- Temporary continuation of coverage that generally lasts for 18 months due to employment termination or reduction of hours of work, divorce, death or a child no longer qualifying as a dependent. Certain qualifying events, or a second qualifying event during the initial period of coverage, may permit a beneficiary to receive a maximum of 36 months of coverage.
- Either you or your family member are responsible for notifying your employer of a divorce, legal separation or child losing dependent status within 60 days of the event. In the case of termination, death or reduction in hours, your employer will be responsible for letting the provider know that you have the right to continue coverage under COBRA.
- Benefits will remain identical to what you had while employed. However, you will be responsible for paying the full premium, plus any applicable fees.

# CLEVER RX

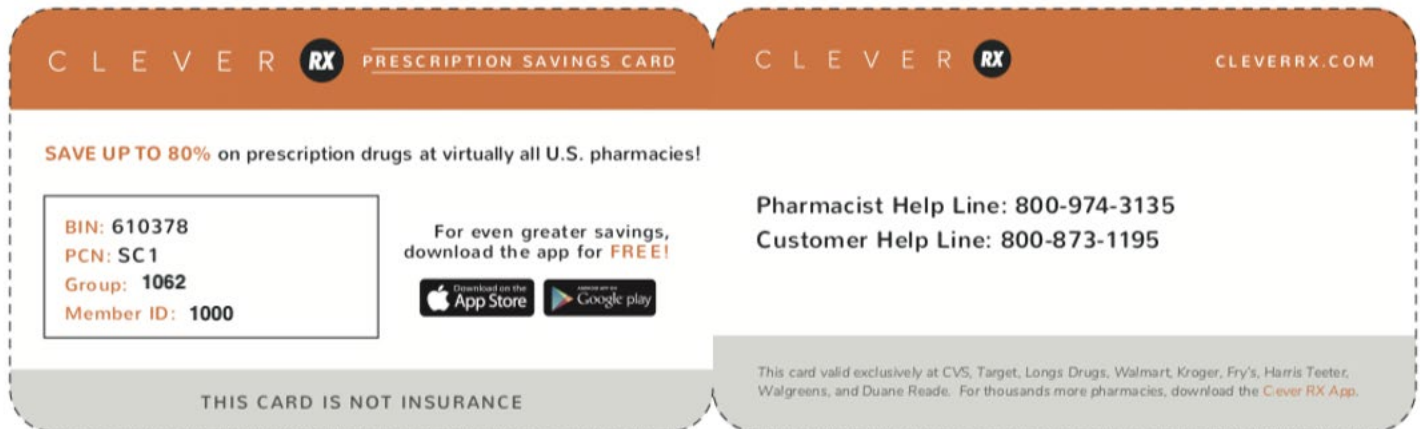
Clever RX | <https://partner.cleverrx.com/ffga> | 1.800.873.1195

Clever RX helps you save money by using a prescription drug savings card. They partner with the healthcare community to bring state-of-the-art, money-savings tools to participants. It helps you save up to 80% off prescriptions drugs and often beats the average copay. Plus, it's completely free. Thanks to Clever RX, you will never overpay for prescriptions again!

## HIGHLIGHTS

- 100% FREE to use.
- Unlock discounts on thousands of medications.
- Save up to 80% on prescription medication – Often beats your copay!
- Download the Clever RX app by using the information on your card below to unlock exclusive savings at over 60,000 pharmacies nationwide.
- Available to use now!

Use Clever RX every time you pay for a medication for instant savings! Download the app or visit the site to price a drug: <https://partner.cleverrx.com/ffga>.





# CONTACT INFORMATION

## Stafford MSD BENEFITS OFFICE

1633 Staffordshire Rd. | Stafford, TX 77477

281.261.9280

[www.staffordmsd.org](http://www.staffordmsd.org)

## FIRST FINANCIAL GROUP OF AMERICA

Jillian Warren, Account Manager

832.853.5523 / [jillian.warren@ffga.com](mailto:jillian.warren@ffga.com)

## CONTACTS

BENEFIT	CARRIER	WEBSITE	PHONE
Medical	BCBS	<a href="http://www.bcbs.com/trsactivecare">www.bcbs.com/trsactivecare</a>	866.355.5999
Prescription Benefits	Express Scripts	<a href="http://www.express-scripts.com/trsactivecare">www.express-scripts.com/trsactivecare</a>	844.367.6108
Dental	Ameritas	<a href="http://www.ameritas.com">www.ameritas.com</a>	800.487.5553
Vision	Ameritas	<a href="http://www.ameritas.com">www.ameritas.com</a>	800.487.5553
Health Savings Account & Flexible Spending Accounts	First Financial Administrators, Inc.	<a href="http://www.ffga.com">www.ffga.com</a>	866.853.3539
COBRA	First Financial Administrators, Inc.	<a href="http://www.ffga.com">www.ffga.com</a>	866.853.3539
Hospital Indemnity	Aetna	<a href="http://www.aetna.com">www.aetna.com</a>	888.416.2277
Gap	American Fidelity	<a href="http://www.americanfidelity.com">www.americanfidelity.com</a>	800.654.8489
Accident	Metlife	<a href="http://www.mybenefits.metlife.com">www.mybenefits.metlife.com</a>	800.438.6388
Term Life Insurance	Blue Cross Blue Shield of TX	<a href="http://www.bcbstx.com/ancillary">www.bcbstx.com/ancillary</a>	877.442.4207
Disability Insurance	American Fidelity	<a href="http://www.americanfidelity.com">www.americanfidelity.com</a>	800.654.8489
Cancer Insurance	American Fidelity	<a href="http://www.americanfidelity.com">www.americanfidelity.com</a>	800.654.8489
Critical Illness Insurance	American Fidelity	<a href="http://www.americanfidelity.com">www.americanfidelity.com</a>	800.654.8489
Permanent Life Insurance	Texas Life	<a href="http://www.texaslife.com">www.texaslife.com</a>	800.283.9233