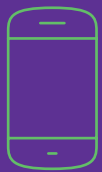


HEALTHCARE NOW AT YOUR FINGERTIPS

Teladoc's® **mobile app** gives you simple and convenient access to a doctor in minutes.



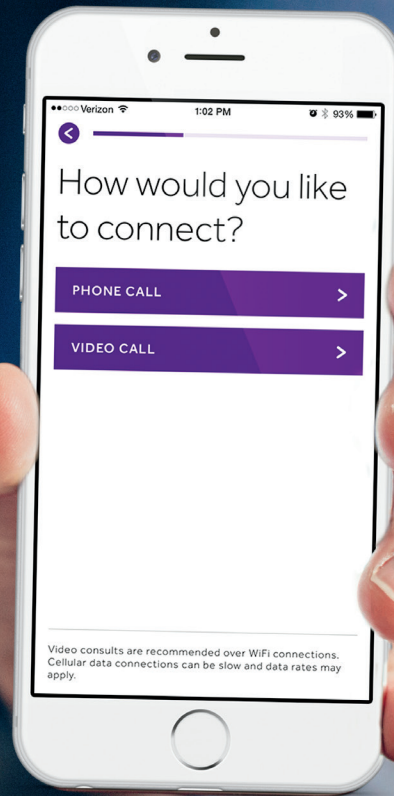
Update medical history.



Request a phone, video or mobile app visit.



Talk to a doctor. **Anytime. Anywhere.**



Talk to a doctor now

Teladoc.com | 1-800-TELADOC (835-2362)

Teladoc can treat



- Cold & flu symptoms
- Respiratory infection
- Sinus problems
- **And more!**

Use Teladoc when



- You need care now.
- You're considering the ER or urgent care for a non-emergency issue
- Traveling out of town

Teladoc's wait time



Talk to a doctor in minutes

 **Download**
the Mobile App!

Available on the iPhone
App Store

ANDROID APP ON
Google play



With your consent, Teladoc can send consult results to your primary care physician.

*median call back time

© 2019 Teladoc Health, Inc. All rights reserved. Teladoc and the Teladoc logo are registered trademarks of Teladoc Health, Inc. and may not be used without written permission. Teladoc does not replace the primary care physician. Teladoc does not guarantee that a prescription will be written. Teladoc operates subject to state regulation and may not be available in certain states. Teladoc does not prescribe DEA controlled substances, non therapeutic drugs and certain other drugs which may be harmful because of their potential for abuse. Teladoc physicians reserve the right to deny care for potential misuse of services.

0116
10E-144

Getting started

It's quick and easy to set up your account.
And once your account is set up, a doctor is only a call or click away.

1. Visit teladoc.com
2. Click “Set up account”
3. Provide your name, contact information, and date of birth.
4. If you do not see a username on your welcome kit (or you do not have access to it), choose “No, I do not have a username.”
5. Select “My employer or insurance provider offers me access to Teladoc.”
6. Enter “Galena Park I.S.D..” in the “Company Name” field.
7. Complete the registration steps.
8. You can also complete your registration over the phone by calling 1-800-TELADOC (835-2362).
9. Employees on the TRS ActiveCare HD plan and those who have waived medical coverage, notify the representative that you have access to consult through the Galena Park I.S.D. plan. Employees on TRS ActiveCare Primary, Primary+ or TRS ActiveCare 2 plans you have access to consult through the TRS Plan.

