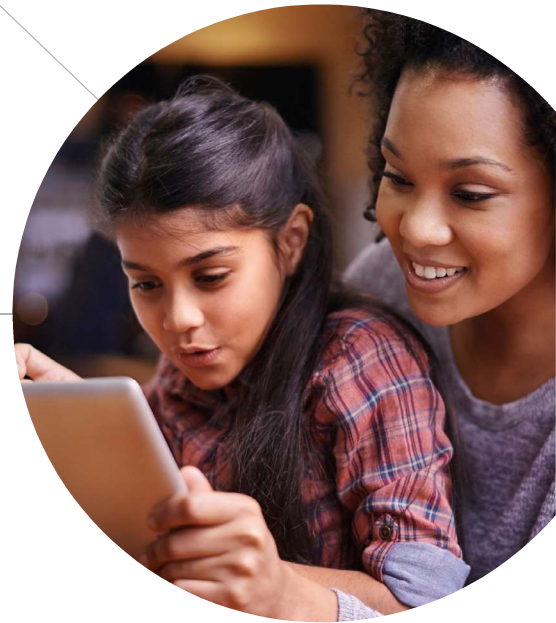




# Let's get started with your member account

Superiorvision.com provides quick access to your vision benefits info. It is shared by all covered family dependents, and family members may log in as the primary member.



## Step 1

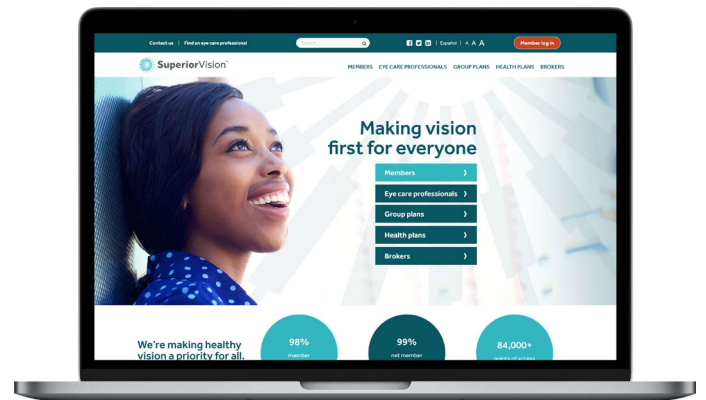
Visit [superiorvision.com](https://www.superiorvision.com) and select "Member log in" from the top navigation.

## Step 2

If you already have an account, enter your username and password. Otherwise, click the "Create a new account" button.

## Step 3

The primary account member can then set up an account with their own username and password and will have immediate access to the secure member area of the website.



### What else can I do in my member account?

Use your member account to easily locate an in-network provider, view your benefits and eligibility, print your ID card, download forms, and more.